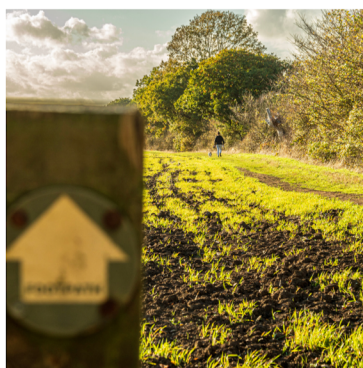


## Points of interest

### Maldon Wick Nature Reserve

Maldon Wick Nature Reserve covers eight hectares. During spring and summer, it is known for its butterflies, with nearly 30 varieties having been spotted in the area. There are regular sightings of uncommon butterflies including the Purple, Green and White-letter Hairstreak. On summer nights the old railway line is lit up by glow-worms, while in spring you can hear the soft flute-like song of the Blackcap. Look out for dragonflies and damselflies, primroses and violets.



### Disused railway line

The railway line that the walk follows was once the Maldon West to Woodham Ferrers line, which opened in 1889. It linked with the newly constructed London Liverpool Street to Southend Victoria line which opened in the same year. During World War 2, passenger services were withdrawn as an economy measure but never reinstated. After the war it was used for freight traffic only, but when the railways were nationalised the line finally closed in 1953.

### Royal Oak

Officially in the hamlet of Hazeleigh, the first record of the Royal Oak is in 1848, when a gentleman called William Sandford ran it as a beer house, joined by his wife Susannah Spooner from the Blue Boar. It was then just called The Oak. It is now an attractive, cosy pub with two bars and a pretty beer garden. Food is served on certain days of the week (check the pub for timings) including locally produced ham and sausages, and there is a good selection of local real ales.



### Refreshments

The Royal Oak	01621 853249	royaloakmaldon.co.uk
Morrisons Cafe	0345 611 6111	my.morrisons.com/storefinder/287
Bal's Burger Van	07917 182994	@balsburgervan

More locations available at [visitmaldondistrict.co.uk/food-and-drink](https://visitmaldondistrict.co.uk/food-and-drink)

## MALDON WICK NATURE RESERVE WALK

### Short Walk

An easy stroll that's close to Maldon town but takes in a lovely nature reserve along a disused railway line and has a stop at a historic country pub



Mainly hard standing but field paths could be muddy. No stiles but some steps



50-70 minutes



2.6 miles



*A railway line transformed into a nature reserve*

### How to get here



West Maldon Community Centre,  
Sunbury Way CM9 6YH



Buses 31,331,332 (Burnham-Chelmsford) or  
90 (Maldon-Witham)



Explorer 176 or 183



[chairing.duck.sticking](https://chairing.duck.sticking)



### Discover the Maldon District



[visitmaldondistrict.co.uk/walks](https://visitmaldondistrict.co.uk/walks)



@visitmaldondistrict



## Route

**1.** Leave the **West Maldon Community Centre** car park on the footpath, with the Centre to your right and the **children's playground** to your left. In 80 yards, turn left onto the footpath/cycle way. Continue on this for 350 yards; turn left on to the signed public footpath which runs along the back of houses and beside the embankment of the **disused railway track**. Go ahead on this until you reach Limebrook Way (B1018). If this footpath is too overgrown or muddy, another option is to go ahead on the footpath/cycle track for another 50 yards, until you see the **Morrison's** supermarket ahead of you. Turn left here and walk through the car park towards Limebrook Way; there is a walkway exit in the far left-hand corner of the car park.

**2.** Cross Limebrook Way with care, using the pedestrian crossing ahead of you. Look for the steps going up the disused railway embankment; ascend the steps and go ahead on the footpath for nearly half a mile. You are now in the **Maldon Wick Nature Reserve**, owned by the **Essex Wildlife Trust**. It is well known for its abundance of butterflies and glow-worms.

**3.** When you reach a crossing track (marked by a footpath post), turn left and descend the steps down the side of the embankment. Continue on the grassy footpath on the left-hand edge of the fields, ignoring a footpath off to your left shortly after coming down the steps. After half a mile you will reach a crossroad of paths. To visit the **Royal Oak** pub, turn right onto the all-weather track. The pub is 200 yards along this track, which ends at the pub garden. After visiting the pub, retrace your steps and go ahead at the four-way junction. After a quarter of a mile (after passing the reed-fringed **pond** on your left), you will reach Sunderland Avenue.

**4.** Cross over Sunderland Avenue and go ahead on the all-weather track running alongside Fambridge Road. On reaching the junction of Fambridge Road and Limebrook Way (there is a roundabout here), turn left and cross Limebrook Way using the pedestrian crossing. Turn right and then left onto Fambridge Road.

**5.** A quarter of a mile after crossing Randolph Close (ignore the footpath/cycle track on your left after 120 yards), turn left on Lambourne Grove. At the end of this dead end, take the footpath ahead through houses, coming out onto Essex Road. Turn right, soon reaching a T-junction. Turn left, and after 30 yards, take the footpath on the left running between houses. This soon joins up with the footpath/cycle track; bear right here. Go ahead for another 300 yards and then turn left onto the footpath which leads back to the **West Maldon Community Centre** and the car park.

